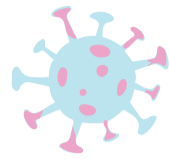
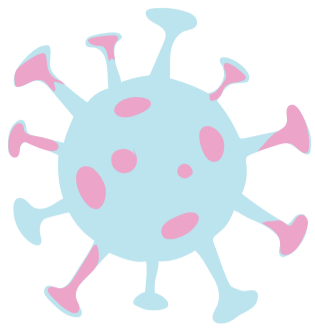


THINGS TO DO IF A CHILD OR STAFF MEMBER HAS SYMPTOMS* OF CORONAVIRUS



IMMEDIATE THINGS TO DO

IMMEDIATELY ISOLATE the child or staff member – PPE is advised

SEND THE CHILD OR STAFF MEMBER HOME and advise parents to have their child tested. Advise the staff member to get tested.
Share local testing details with parents

DEEP CLEAN THE SETTING – floors, surfaces, hand contact points, toys and games etc

Inform other parents that **a child or a staff member** has been sent home with coronavirus symptoms but you are allowed to remain open

Continue working **PENDING TEST RESULT**

The child or staff member isolates for **10 days** or until they receive a **negative test result**

IF THE TEST IS NEGATIVE

The child or staff member and their families can **come out of isolation** and return to the setting **if they are feeling better.**

IF PARENTS REFUSE TO TEST THEIR CHILD OR IF A STAFF MEMBER REFUSES A TEST

| Child or staff member | Child or staff member's family | Setting remains open | Child or staff member shows symptoms |
|----------------------------|--------------------------------|-----------------------|--|
| isolate for 10 DAYS | isolate for 14 DAYS | no isolation required | follow the IMMEDIATE THINGS TO DO |

IF THE TEST IS POSITIVE

Test and Trace (0300 013 5000) will contact the parent or staff member for details of close contacts

Close contacts are people who have been within 2 metres of the child or staff member for more than 15 minutes in the 48 hours before symptoms started (correct 06.2020)

Close contacts of the positive child or staff member will be advised to isolate for 14 days

You might want to take advice from ACAS** about staff payments during an isolation period

Test and Trace will give latest advice about what household members need to do next

The child or adult who tested positive must complete the 10-day isolation period – and should ensure they feel better before returning

IF TEST AND TRACE CONTACT YOU

If you, a family in your care or a staff member receive a call from Test and Trace, you/they **will be advised to isolate for 14 days.**

The 14 days starts from the date of last contact with the person who tested positive.

MORE INFORMATION - POSITIVE CASES

Family members must avoid contact with the isolating person and keep washing their hands.

If you develop symptoms, you should book a test and family members must begin 14 days isolation.

Further guidance about isolation periods can be found on the NHS Direct website***.

Your Local Authority will inform you about reporting procedures.

*Symptoms include continuous dry cough or high temperature or loss of sense of smell

** ACAS for all staff advice - 0300 123 1100

*** More information from NHS Direct here:

<https://www.gov.uk/guidance/nhs-test-and-trace-how-it-works>

The above information is based on latest guidance 17.06.2020.